

D.7 WRC DCSP Tracking kit Installation Instructions

INSTALLATION INSTRUCTIONS

The DCSP Tracking Unit is a system to improve the SAFETY of competitors taking part in WRC events.

The aim of this system is to allow the Clerk of the Course and Event Safety Officers to track the location of all competitors in the rally, as well as various other vehicles such as ambulances, FIA observer cars, FIA helicopters and other emergency vehicles.

The DSCP Tracking unit requires equipment to be installed in all competitors' cars, which must be fitted and connected before arrival at scrutineering.

It is VERY important that the kit is easy to reach and remove. If there are any problems with any part of the tracking kit, they have to be dealt with during the 10minute service. You will have many other things to work on during that time so it is very important for you and us that the kit is accessible and that items are easy to replace or remove.

The DSCP Tracking unit must be used together with the DSCP Tracker Base. This allows the quick fitting and removal of the unit.

DSCP Tracking Unit



1. The DSCP Tracking unit & base should be flat on the floor of the car.
2. Avoid locating the DSCP Tracking unit & base close to very hot areas in the car.
3. Position the unit so that it is easy to reach.
4. Make sure you can see the LED's from the outside of the car.
5. Leave enough room for the cables to be easily connected (see drawings on page 6).

IMPORTANT

1. The DSCP Tracking unit must be accessible and easy to remove from the base during the 10 minute service.
2. DO NOT fix the unit where it will be difficult to reach i.e. under a seat.
3. The DSCP Tracking unit & base must be very secure.
4. When fitting the rubber straps, do not use pliers or grips to pull on the metal ring.

FIA EMERGENCY CONSOLE



The Emergency Console must be fitted between the driver and the co-driver.

1. You can use size M4 fasteners (but should not be difficult to undo)
2. When connecting the cable please ensure that the slot on the cable plug is aligned with the guide on the console socket as shown in the photo.



3. Insert the connector into the plug and twist the end of the connector that has the grip, so that the locating collar is attached securely.
4. Leave enough room for the connector to be easily connected (at least 65mm).

IMPORTANT

1. The Emergency console must be easily accessible by BOTH the driver and co-driver.

CONSOLE CABLE

Approx length - 3900mm



1. Connects to the largest connector on the DSCP Tracking unit
2. Do not bend the cable especially near the connector.

POWER CABLE

Approx length - 3000mm



1. You should make suitable provision for power to the DSCP Tracking unit via the ignition switch (or master switch) at 12V DC, protected by a fuse or circuit breaker rated at 5A continuous.
2. DO NOT cut or shorten the cable.
3. Do not bend the cable especially near the connector.

UHF ANTENNA

Approx length - 5250mm



1. Place the antenna on the roof of the car.
2. It should be near the back of the roof away from the edges & at least 300mm from the GPS antenna.

GPS ANTENNA

Approx length - 4950mm



1. Place the antenna on the roof of the car.
2. It should be near the back of the roof away from the edges & at least 300mm from the UHF antenna

Note

1. Holes can be made that take 20mm cable grommets to pass both the UHF and GPS antenna cables through.
2. You can secure the antenna cables with tape if necessary. DO NOT cover the antenna head with tape.
3. Make sure there is no danger that the antenna cables will be cut when passing through doors and boot lids

DSCP Base Technical Information

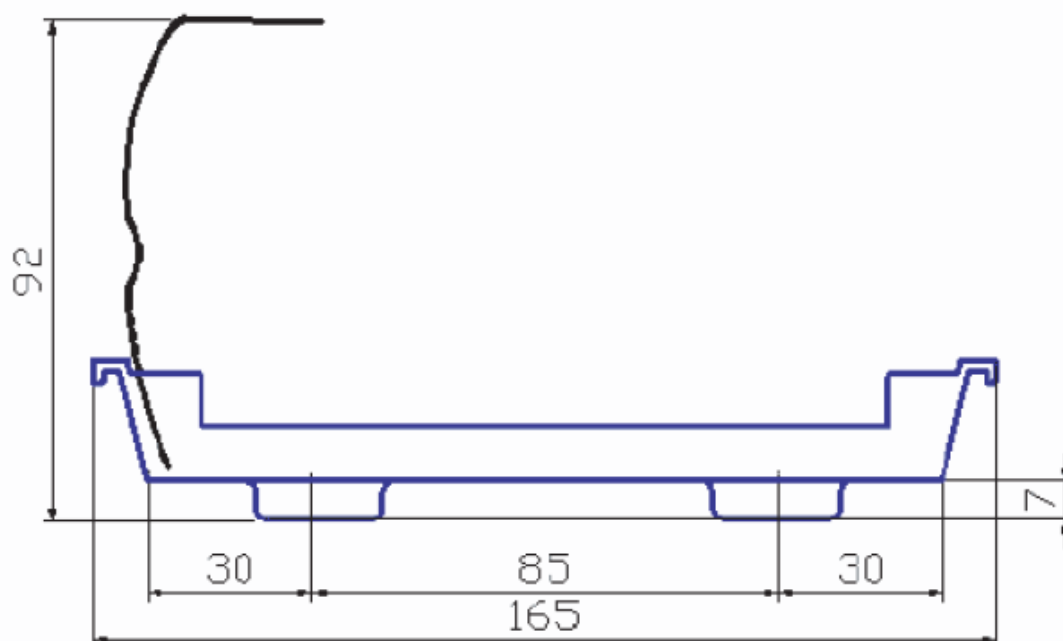
Dimensions

DSCP Tracker Base external dimensions: W:165mm, H:30mm, L:222mm

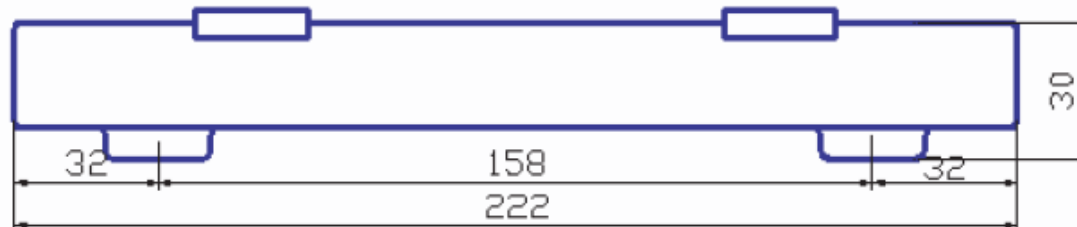
Weight: 0.310kgs

DSCP Base Technical Information

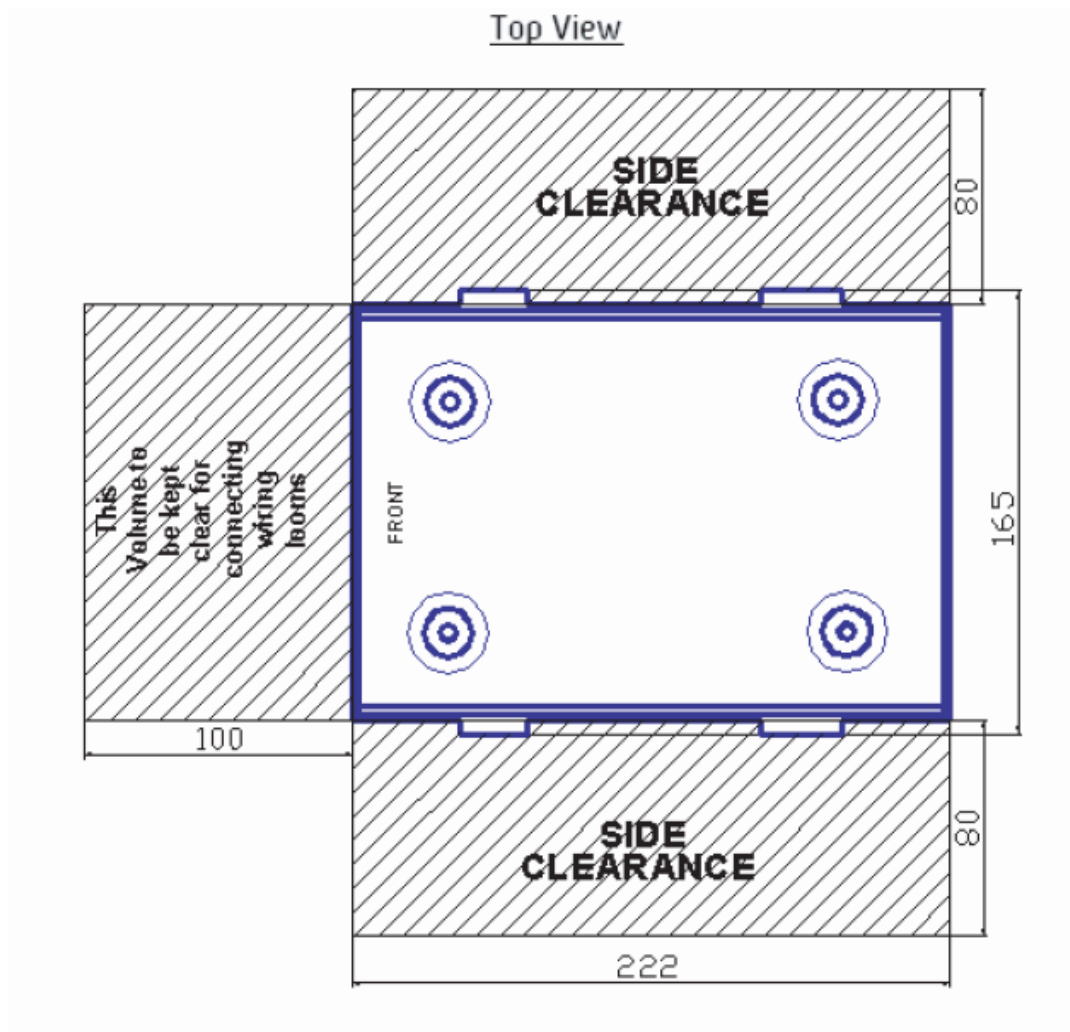
Front View



Side View



Note 01: All dimensions in mm.



Note 01: Only one 'Side Clearance' is required to be kept clear for mounting purpose.

Note 02: The Orientation of the base if possible facing to nearest door, easy to be reached within an 'arm' length. LEDs on the DSCP tracker have to be visible easily from the outside of the car.

Note 03: The mounting pressing has been designed to accommodate a M6 Hex CAP Head screw or M6 Hexagon Head bolt.

DSCP Tracker Base



DSCP Tracker Base and Unit



Fitting the DSCP Tracker to the base plate using the rubber straps



Pull the strap with one hand, while your thumb from the other hand is holding the strap in place. See diagram.



With the strap fully stretched place your thumb on the top of the strap.



Place the ring of the strap over the lip of the tray

When fitting the rubber straps Do NOT do the following



Do not pull the strap at an angle, it will damage the metal ring

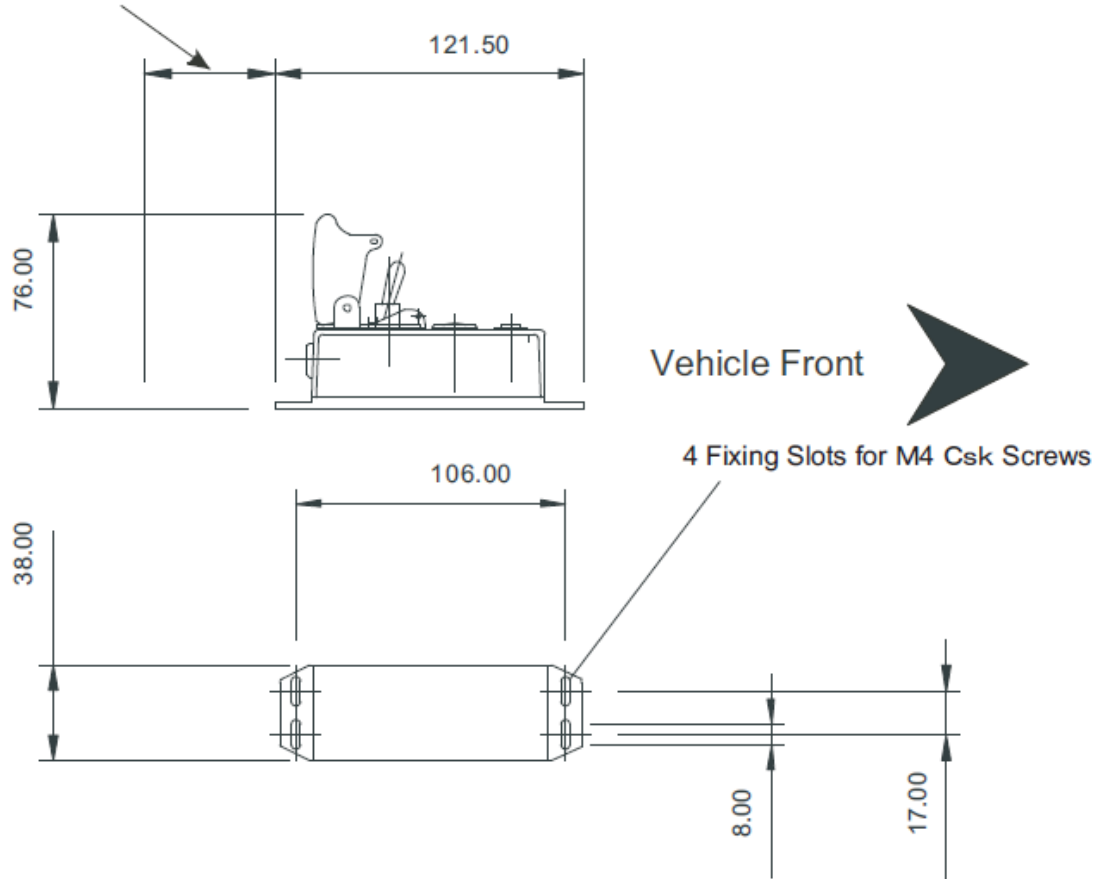


Do not use pliers to install or remove the strap, it will damage the strap & metal ring

Remember that any breakages will have to be paid for.

FIA Emergency Dimensions

Allow 50 mm for connector clearance

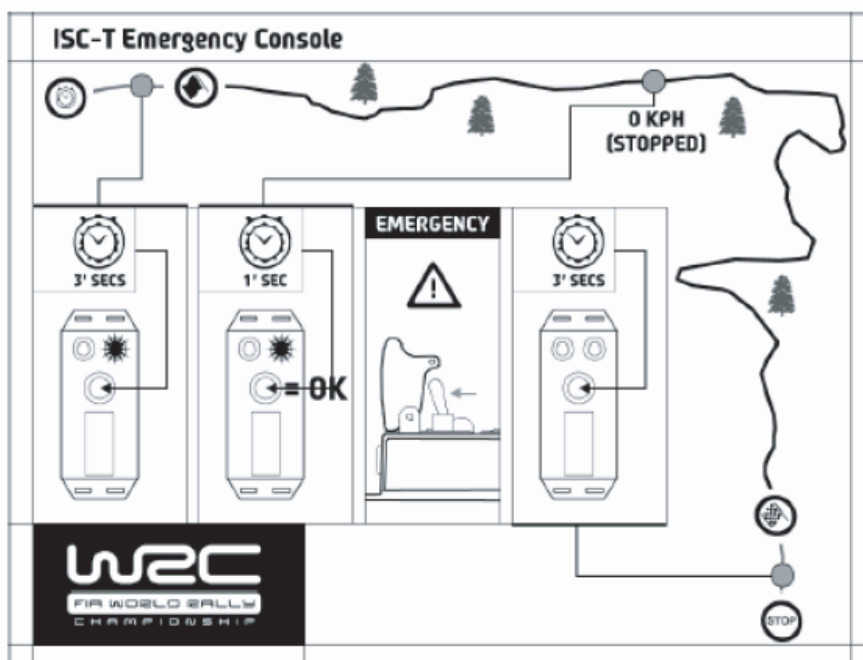
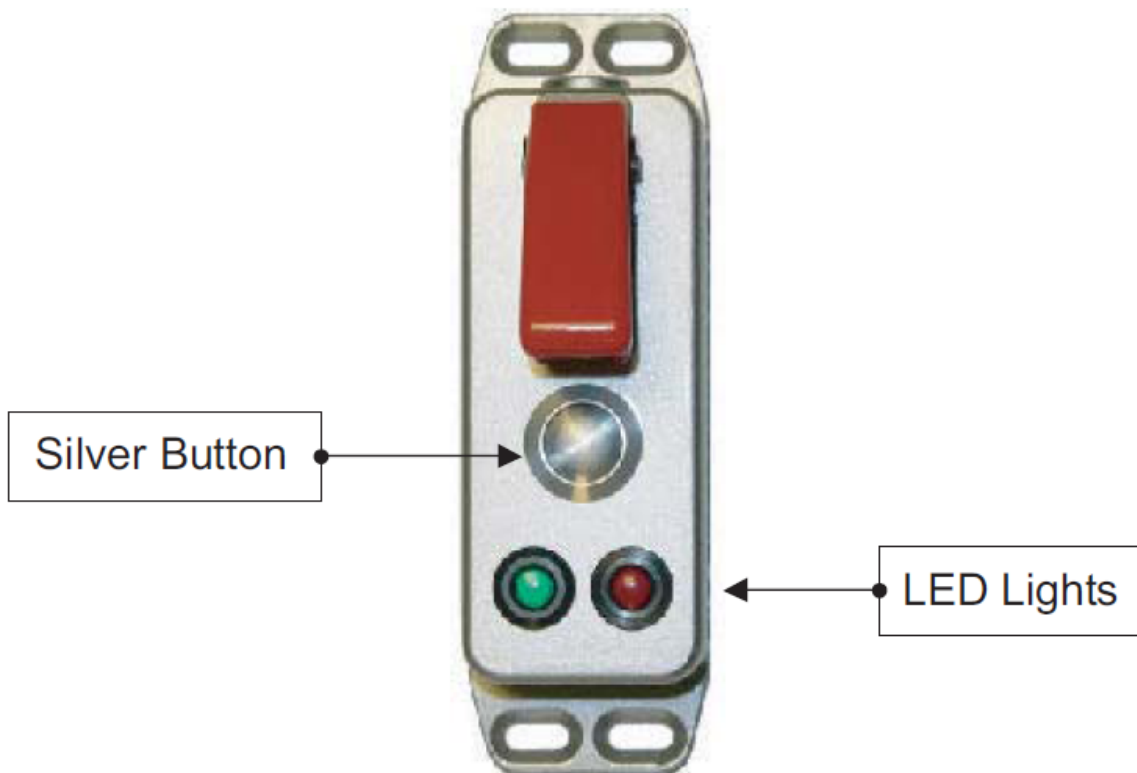


IMPORTANT

- The DSCP Tracking unit must be fitted and connected before arrival at scrutineering. It will be checked at scrutineering by ISC-T engineers.
- If you retire from the rally you **MUST** return all loaned equipment to ISC-T at the Service Park or Headquarters as it was given to you.
- The DSCP Tracking unit and all loaned equipment must be returned to ISC-T within 30 minutes of the results being declared final.

WRC Safety Tracking Operation

The system has 2 modes Liaison and Stage.



Liaison Mode

At the start of each leg when the system has been off overnight it will be in LIASION MODE (No LED'S lit)

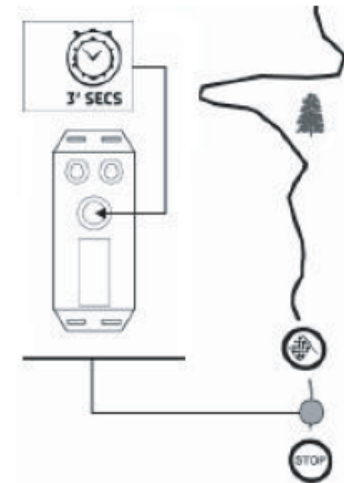
Stage Start

At each STAGE START you MUST switch the system to STAGE MODE.
To do this you press and hold the silver button until the Green LED light comes on.

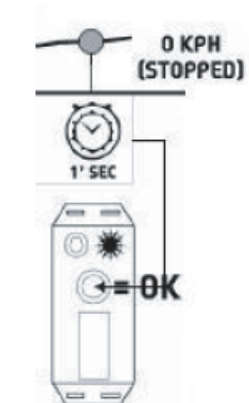


Stage Stop

At each STAGE STOP you MUST switch the system to LIASION MODE
To do this you press and hold the silver button until the LED lights go off.

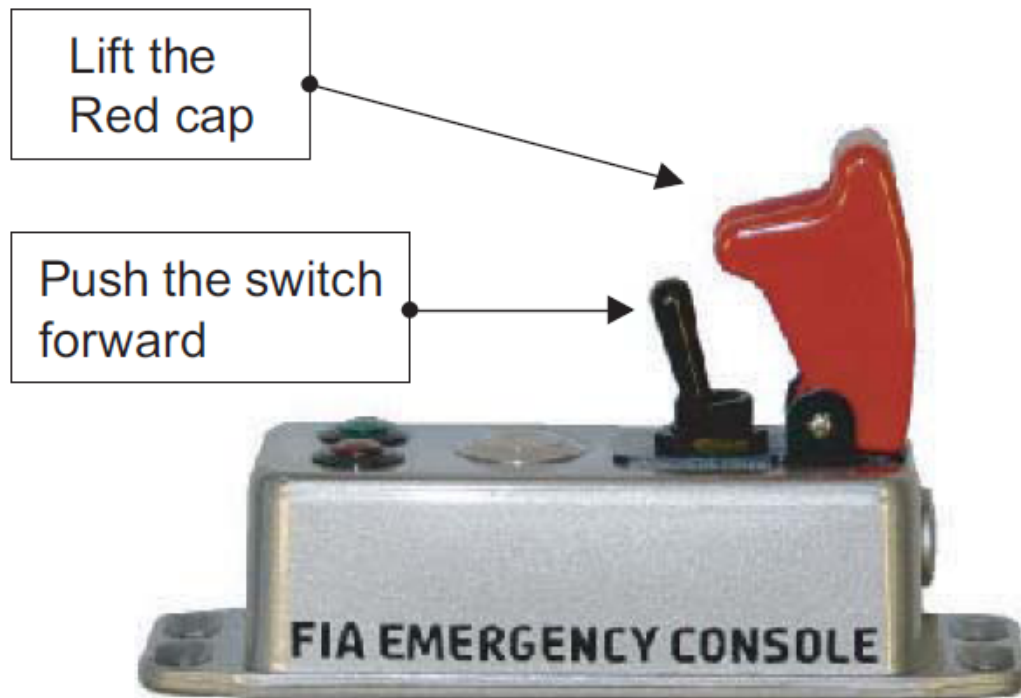


If you stop while on a STAGE and are OK please press the silver button once.
The system will reset to SPECIAL STAGE MODE as soon as you move again.
If you do not press the silver button an automatic alarm is activated after 60 seconds.



EMERGENCY USE

In an EMERGENCY lift the red cap and flick the switch.
The RED LED light will flash



In an EMERGENCY when you cannot flick the red switch an alarm will come on automatically after 60 seconds

If you flick the red switch by accident
Put the red cap back down
Contact your team or a rally official as soon as possible to report the incident.